

# Iowa Sportsman

MT. PLEASANT, IOWA

Located at the Steffes Auction Pavilion, 605 East Winfield Ave. (North edge of Mt. Pleasant, Crossroads of Hwy 218 & 34)



## SATURDAY, MAY 2, 2015 AT | 9AM



### MOTORHOMES

**2004 Damon Ultra Sport**, 69,336 miles, 39' motor home, class A, diesel pusher, 330 HP Cat, 6 speed Allison automatic, air ride, air brakes, 2 slides, sleeps 8, 2 leather couches, gas stove, corner sink, combo fridge, laundry hookup, 10 gallon water heater Winegard satellite system, 7.5 Onan diesel generator, dual A/C units, ducted heat and air, NEW Michelin 275/80R22.5 rear tires

**1997 American Dream**, 142,554 miles 40' motorhome, class A, 325hp 8.3L Cummins diesel pusher, Allison 6 spd, automatic trans, air ride suspension, sleeps 5, rear queen bedroom, leather couch, ice maker, laundry, convection oven/microwave, kitchen table & chairs, dual A/C units, ducted heat/air, dual furnaces, fireplace, (2) flat screen TV's, corner shower, porcelain stool, electric awnings, 7.5 KW Onan Generator, basement storage w/ pull out drawers, automatic leveling system, 295/75R22.5 tires, (NEW REAR TIRES)

**1995 Damon Ultra Sport**, 24,000 miles 32' motorhome, sleeps 5, newer tires

### TRAVEL TRAILERS

**2006 Cedar Creek 33LBHTS**, 5th wheel camper, 3 slides, sleeps 7 front queen size bedroom, bunk beds, corner shower, stove, fridge, stereo system, TV antenna, tandem axles, 235/85R16 VIN 4X4FCR246P193043

**2005 Springdale 18.9FL**, 23' camper, bumper hitch, awning, heat, a/c, large fridge w/ separate freezer, dual propane tanks, mounted scissor leveling jacks, sleeps 7, tandem axle, VIN 4YDT189205N119168

**2000 Hornet**, 30' travel trailer, large slide out, sleeps 6, queen bed, couch, kitchen table, refrigerator, stove, microwave, corner sink, bar stools, shower, furnace & AC

**1967 Airstream 24'** travel trailer, sleeps 4, couch, fold down couch, stove, refrigerator, bath, awning, AC needs fixed

**Nomad by Skyline 2610** travel trailer, sleeps 8, front queen bedroom, bunks in rear, bath, couch, kitchenette, microwave, stove, sink, refrigerator

**Shasta Flite 25'** 5th wheel camper

### UTILITY TRACTORS - SKIDSTEER

**2008 JD 3720 MFWD**, 443 hrs., cab, a/c, heat, 3 pt., 540 PTO, 1 hyd., mid mount-couplers, A-B-C hydro

**2008 JD 2520 MFWD**, 275 hrs., open station, 3 pt., 540 PTO, 62D(60")deck, hydro, ROPS, power steering, R4 tires, rear wheel weights, S/N LV2520H407349

**2004 JD 2210 MFWD**, 268 hrs., 3 pt., 540 PTO, hydro, ROPS, no mower deck, S/N LV2210H318734

**1978 JD 950 2WD**, 2,581 hrs. open station, 540 PTO, 60" deck mid mount, S/N 002091CH

**1953 Farmall Super M**, NF, fenders, new battery, new seat, new tear drop lights, new 13.6x38 rears, new 600x16 fronts

**1979 JD 60**, skid steer, Kohler 16hp, ROPS, S/N L060H095518M

**2007 JD 990** utility tractor, 252 hrs, MFWD, 3 pt, 540 PTO, ROP, w/ 300CX Loader, joystick controls

### ATTACHMENTS & MOWER

**Bradco 9HD** skid steer backhoe attachment, 12" bucket, outriggers

**Gannon** 3 pt. box blade w/ hyd. adjustable 7 shank scare-fire bar, S/N HD24484HXDENG

**Land Pride 9'** blade, 3pt., hyd. angle, hyd. shift, quick hitch, S/N 680994

**Land Pride SP2060**, 5', 3pt. soil pulverizer JD #8, 7' sickle bar mower, draw bar mount, 540PTO

**Woods RM 59** finish mower, 3 pt, 60", 540 PTO, solid rubber tires, S/N 84007

### EXCAVATOR - DUMP TRUCKS

**1995 Daewoo 130-2** excavator, 6532 hrs.

**1990 Mack CH613**, 585,000 miles, dump truck, 9 spd., 16"6" bed

**1980 Mack**, 302,000 miles, dump truck, 285 motor, 2 stick transmission, 15' steel box Contractor/Service Box has side damage

CM Pickup Flatbed 2 gooseneck balls, side storage

### TRAILERS - ENCLOSED TRAILER

**2015 H&H Speedloader 18'** bumper hitch, tandem axles, brakes on both axles, lights, tilt bed

**2012 H&H 20'+5'** gooseneck trailer, 20,000 GVWR, tandem axle duals, fold up or fold over spring assist ramps, adjustable rear center filler panel, chain tray, 235/80R16 tires, (NEW Never Sold)

**2008 GR Trailers 18'** car trailer 16' + 2' dove tail, tandem axle, pull out ramps, lights, brakes, 205/70R15 tires, VIN 1G9CH182X8P376232

**2005 U Cargo**, 16' enclosed trailer, tandem axle, contractors rack, ramp door

**2003 24' flatbed trailer 18' + 6'** dove tail, fold up ramps, pintle hitch, electric brakes, tandem axle duals

**1990 Triggs 16'** livestock trailer, bumper hitch, 42VEA16J5KB890518

**Toro Dingo 4x5'** single axle trailer w/ 3' fold down ramp, diamond plate steel floor, 5.30-12 tires

### BOATS - JET SKIS

**2008 Landau Limited Edition 19'** pontoon boat, bikini top, Humming Bird depth/fish finder, 2 lives wells, 2 tables, full fitted cover, sells with 2012 Yamaha 70hp 4 stroke outboard motor(warranty on motor exp. 2017) & Landau single axle trailer, Hull ID: KPZ00488K708

**2005 Sedona F19**, 19' pontoon boat, bikini top, depth finder, anchor winch, vinyl cover, sells with 2005 Yamaha 50 hp outboard motor & 2005 Haul Rite single axle trailer

**1993 Crownline 225** bow rider, 350 inboard, sells with trailer

### BOATS - JET SKIS CONT.

**1979 Lund 16'** V bottom boat, deep well, sells with Johnson 55hp motor & trailer

**1977 Delta 19'** tri hull bow rider, 351 Mercruiser, one owner, sells with 1999 trailer

**Pelican Bass Raider 8E**, 2 man fishing boat, 2 fishing chairs

**2005 Sea Doo RXT**, 121 hrs., 3 person jet ski, supercharged 4-tech liquid cooled 4 stroke, reverse, mirrors, rear step, trim tabs, with trailer, new fitted cover

**2002 Kawasaki 1100 STX DI**, 51 hrs., 3 person jet ski, 2 stroke, reverse, mirrors, rear step, custom cover, new battery & ECM computer, sells with Karavan single axle trailer KAW11862D202

### LAWN MOWERS

**2013 JD X750**, 270 hrs., diesel, liquid cooled, 24hp, 54hc deck, auto connect, mid hyd, S/N 1MOX750AVDM010094

**2010 JD Z925A** 161 hrs., zero turn, Kawasaki 24.5hp, 60" deck, hydrostatic S/N T0925APO13274

**2008 JD X748**, 4X4, 463 hrs., Yanmar diesel, 24hp, liquid cooled, 62c deck, wheel weights, grill guard, S/N MOX748A030557

**1998 JD 445** riding lawn mower, 783 hrs., 54" deck, bagger attachment

**JD RX75** riding lawn mower, 9hp, 30" deck

**JD LA105** riding lawn mower, 293 hours, 42" deck

**JD 277** riding mower, Kawasaki V-Twin gas, 48" deck, hydrostatic drive

**2008 Cub Cadet GT1554**, 411 hrs, Kohler 27hp, 50" deck

**2008 Cub Cadet FMZ50**, 82 hrs., Kohler 22hp, 50" deck, S/N: 00188Z90016

**2007 Cub Cadet LT1042**, Kohler 19hp, 42" deck

**1999 Cub Cadet 3225** Cub Cadet LTX1040, 641 hours, 22 hp, 42" deck

**1993 Kubota G1800**, 1,536 hrs., diesel, 48" deck, hydro, new battery

**1991 Kubota G2000**, 1,726 hrs. liquid cooled 20 hp gas, 54" deck, foot controlled hydro drive

**2012 Husqvarna YTH 23V48**, B&S 23hp, 48" deck

**Poulan Husky 1565**, riding lawn mower, Kohler 16hp, 42" deck, hydrostatic drive

**Gravely Commercial ZT-5400**, Hydro-gear, zero turn mower, Kohler gas, 60" deck

**Craftsman** riding lawn mower, 15 1/2hp, 42" deck

**Case 222** lawn tractor, Kohler 12hp, hydraulic drive, does not fire/run

**Scott by John Deere** riding lawn mower, 449 hrs., Kohler 25hp, 54" deck

**Peco** collection system-mounts on front mount mower, 8hp, B&S Ind. motor, suction tube & collection wagon, elect. start

### PARTY BUSESSES - VEHICLES

**1991 Ford Phoenix E-350** 123,000 miles, Party Bus, 460 V-8 gas, automatic, 18 passenger, roof top A/C, rear heat, custom sound system, 215/80R16 tires VIN 1FDKE37G4MHA19572

**1988 Chevy C60 BlueBird Bus** 41,782 miles, Hawkeye Tailgating Bus, 29 passenger bus, V8, 4 spd., CD stereo, inverter, 22.5 tires

**1994 Ford F350** 109,007 miles extended cab, 2WD, dually, 8' bed, 7.3L turbo diesel, automatic transmission w/ US gear under-drive, aux. fuel tank, tool box, gooseneck ball, vented tail gate, Kelderman air suspension system, trailer brakes, electric sliding rear window, chrome roof mount air dam, aluminum wheels, 245/75R16 tires, (5,000 miles on engine overhaul), VIN 1FTJX35K8RKA25239

**2004 Ford Econoline E250**, 238,933 miles showing, gas engine, shelving and racks in back, cargo rack on top, VIN 1FTNE24L74HA13911

**1998 Lincoln Town Car**, 207,842 miles, 4.6L V-8, automatic, (engine has approx. 100,000 miles on it), sunroof, leather, 4 door, loaded w/ options, aluminum wheels, landau top, 225/60R16 tires, VIN 1LNFM83W4WY706486

**1983 Chevy** conversion van, diesel, automatic, 3/4 ton

### UTV'S - ATV'S

**2012 Honda Big Red**, 4x4, 3,232 miles, 614 hrs., poly doors, ROPS, windshield, poly roof, dump bed, trailer hitch, VIN 3H1VE0100CD300415

**2011 Honda Big Red**, 4x4, 359 miles, 417 hrs., poly doors, ROPS, lights, dump bed, trailer hitch VIN 3H1VE0108BD201078

**2009 Kawasaki 4010 Mule**, 4x4, 2,801 miles, diesel, power steering, ROPS, dump bed, trailer hitch, new tires, VIN JK1AFDF189B500364

**2009 Cub Cadet Volunteer**, 4x4 544 hrs., 748cc EFI, Kohler engine, ROPS, dump bed

**2008 Polaris Razor 800**, 4x4, 1,647 miles, 273 hrs., winch, lights, ROPS, dump bed, VIN 4XAVH76A68D637641

**Polaris Ranger**, 4x4 ROPS, windshield, soft top cover, dump bed, VIN 4XARD50A42DI5236

**2007 JD 6201**, 4x4, 532 hrs., dump bed, S/N MOXUVGX017140

**2009 Yamaha Raptor**, 90 cc, 4 wheeler, auto suspension, independent suspension VIN 5Y4AH23Y68A001760

**2007 Yamaha Wolverine 450**, 4x4, 966 miles, 4 wheeler, on command 4x4, front winch VIN 5Y4AJ21Y37A008137

**2001 Polaris Sportsman 400**, 4x4, 4 wheeler, ind. suspension, automatic, electric start, handle bar warmers, front winch, chrome wheels w/ Mud Master tires, VIN 4XACH424A1A516724

### ATV'S CONT.

**2000 Yamaha Raptor 250 MR**, 4 wheeler, 5 speed manual

**Kawasaki Bayou**, 2WD, 4 wheeler, 220cc 4 stroke, 5 speed, reverse, electric start, throttle stop adjuster

### MOTORCYCLES - GOLF CARTS

**2008 Harley Davidson Electra-Glide**, 38,640 miles, 96ci engine, 6 speed, cruise control, AM/FM stereo, w/ CD & aux input, faring, hard bags, ape hangers, highway bars & foot pegs, VIN 1HD1FV4128Y693801

**2005 Suzuki 125L** motorcycle

**2005 Kawasaki KX65** dirt bike, VIN JKBKXEAC65A045378

**2002 Suzuki Marauder 800**, 12,166 miles 5 speed, liquid cooled, new rear tire, VIN JS1VS3A422102193

**2002 Honda Saber 1100**, 40,292 miles, bags, touring seats, back rest, luggage rack, windshield, exhaust, VIN 1HFSC43022A205518

**2002 Yamaha YZF1000R1**, 13,000 miles, 1000cc

**2001 Suzuki JR80**, VIN LM1DC143511105233

**1997 Kawasaki KLR 650**, 25,000 miles items: front & rear tires, chain, battery, VIN JH2PC1700GM010975

**1985 Suzuki Madura GV700GL**, 28,009 miles liquid cooled, V-4 700cc, VIN JS1VP714F2101150

**1982 Yamaha XS400J Maxin**, 11,712 miles, new items: rear tire, chain, fork seals, front master cylinder, brake pads, battery, recovered seat, carbs professionally cleaned & adjusted, VIN JYA12R007CA009873

**1982 Honda CM450E**, 22,224 miles, windshield, VIN JH2PC0539CM001516

(6) 2003 Yamaha gas golf carts

### GUNS

**Baikal** double barrel side by side shot gun, 20 ga., 2 3/4" or 3", S/N MP220, NEW IN BOX NEVER FIRED

**Bushmaster AR-15**, 5.56x45 NATO Caliber, complete upper receiver assembly w/ bolt carrier group, optics ready, 1:9 twist 16" barrel, free floating hand guard, New in box

**AR-15** complete lower half, Plum Crazy C-15 lower receiver, Accu Group firing controls, Tapco 6 position stock, SN RM06947 (Must be transferred by FFL)

**J.C. Higgins** .410 ga shotgun, single shot bolt action, M103.720, 3" chamber, smooth bore 23" barrel

**Savage 110 Rifle** 30-06, Tasco 3x6 scope

**Springfield Armory M1** Garand Rifle 30-06

### ONLINE BIDDING!

### GUNS CONT.

**Gamo** air rifle, 177 caliber, 3x9 scope

**MEC** steel shot reloading system & equipment

(2) **Pro-Line** compound bows, Point Blank LTD set at 65# at 28" draw

(3) Silent quivers w/ 6 arrows in each Setup with 125 thunderhead broad heads

(12) Aluminum shaft bare arrows (NEW) Hip quiver for ring & bow caddy & arrows fits on belt

Hard case for compound bow

Bow Press for repair & setup

Soft case for compound bow

Single stage fletcher, LH Helical

### UTILITY SHED - TOOLS

10'x16' Utility Shed Wood frame, double doors, steel roof, 1 yr. old; Ice Fishing shelter; **Victor 2'x3'** antique safe; Small safe; Tackle box w/ contents; Table saw; **Shopsmith** band saw; Planer; **Miller M-180** arc welder; **Delta 10'** compound miter saw; Acetylene welder; Jig saw; Isolating multi tool; Men's left handed golf clubs; Women's right handed golf clubs; Golf bags; Antique golf clubs; Antique croquet set; Full live size Fox mount; 3 Deer Mounts; Fishing equipment; **B&W** 5th wheel hitch mounts to hide-a-ball system from gooseneck ball; **B&W** 5th wheel hitch fits Ford factory pickup truck bed; **StowMaster** tow bar for motorhome, stainless arms & cover bag; (12) Do-it Corp Sinker Moles

### YOU MAY STILL CONSIGN!



### Preview on Friday May 1st from 8-5pm

#### ATTENTION CONSIGNORS

When checking in you must bring titles & registrations, they must be up to date & in consignor's name. No exceptions!

Consignments taken on

Wednesday, April 22 - Friday, April 24th | 8am-5pm

Saturday, April 25 | 8am-12Noon

Monday, April 27 | 8am-5pm

**Last Day to Consign:**

Tuesday, April 28th | 8am-Noon

#### ATTENTION BUYERS

Sales tax applies.

\$35 document fee per titled item will be charged.

Additional charges may apply when purchasing ATV's/ORV's

All State & Federal gun laws will be strictly enforced.

A local FFL will handle all paperwork, with a \$25

transfer fee per gun. Purchase of a hand gun requires a permit. Please note all guns and firearms must be transferred to an authorized Federal Firearms

Licensed gun dealer in your area for out of state buyers, all handling, packaging & shipping fees are

the buyer's responsibility. Out of state buyers will need to supply FFL information for transfer.

Complete terms, lot listings & photos at **SteffesGroup.com**

Steffes Group, Inc., 605 East Winfield Avenue, Mt. Pleasant, IA 52641 | 319.385.2000 | SteffesGroup.com  
Tim Meyer, Terry Hoenig, Chris Richard, Lynn Richard, Jason Denning, Nate Larson, Duane Norton, Seth Twedt, Jared Miller, Scott Steffes



Iowa

SATURDAY, MAY 2, 2015 AT | 9AM

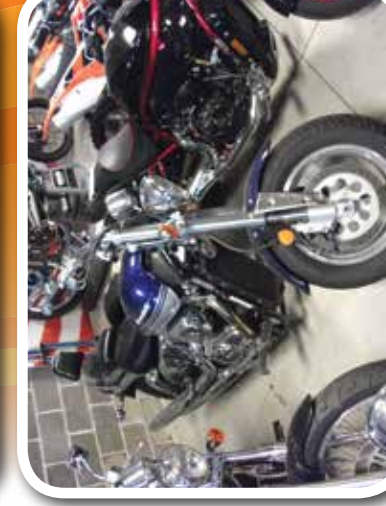
# SPORTSMAN



Steffes Group, Inc.  
605 East Winfield Avenue  
Mt. Pleasant, IA 52641

RESORTED  
FIRST CLASS  
US POSTAGE  
PAID  
Permit #243  
Rock Island, IL

Complete terms, lot listings & photos at [SteffesGroup.com](http://SteffesGroup.com)



Iowa Sportsman Event  
Mt. Pleasant, Iowa  
Saturday, May 2, 2015 at 9AM

# Iowa SPORTSMAN

MT. PLEASANT, IOWA Located at the Steffes Auction Pavilion, 605 East Winfield Ave.

SATURDAY, MAY 2, 2015 AT | 9AM



319.385.2000 | [SteffesGroup.com](http://SteffesGroup.com)